

# BIOTANIQUE®

DERMOSKIN EXPERT



It is our conscious choice to make skin care products that comply with the highest quality standards. We want the Biotaniquè brand to be the synonym for effectiveness, sophisticated skin care and safety. We are proud to present Biotaniquè, a unique brand straight from Polish laboratories.

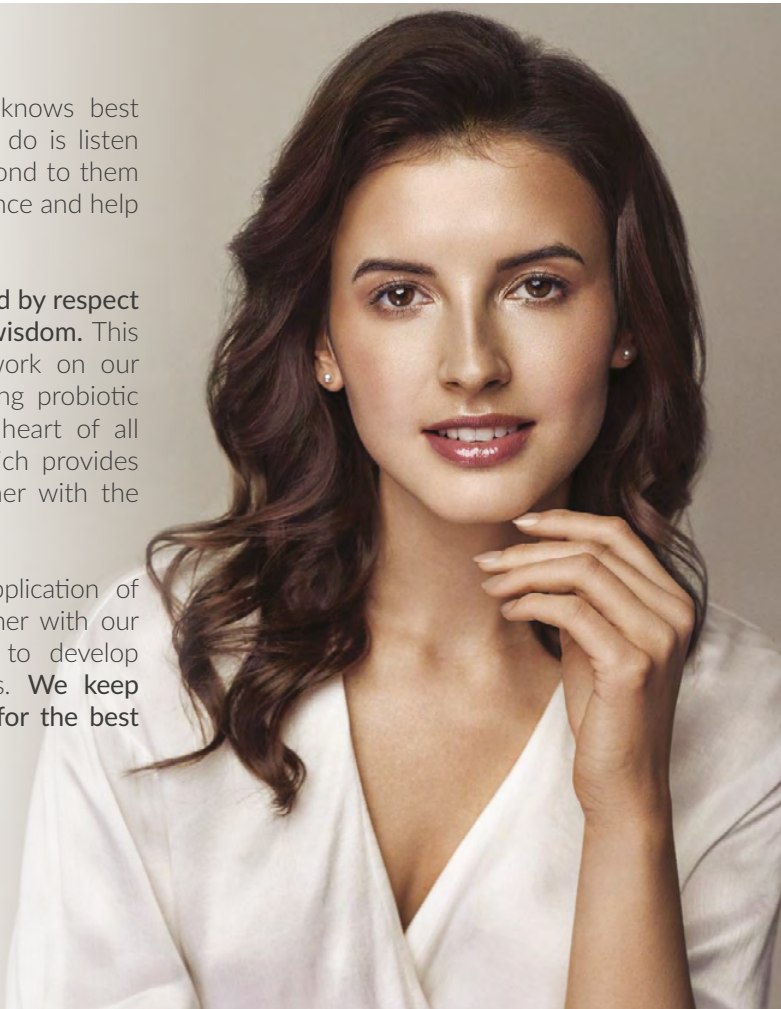


## SMART SKIN SUPPORT

**Human body is incredible.** It knows best what it needs. All you need to do is listen to the signals it sends and respond to them properly. Do not disturb its balance and help it, when it is in need of support.

**The Biotaniquè brand was shaped by respect for the body and praise of its wisdom.** This philosophy guides us as we work on our formulas. It led us to developing probiotic **pro.aQua** water, which is the heart of all Biotaniquè formulations and which provides a unique double action, together with the active ingredient.

**We believe in innovations.** Application of the newest technologies, together with our experience, makes it possible to develop modern and effective formulas. **We keep searching innovative solutions for the best skin care effect.**



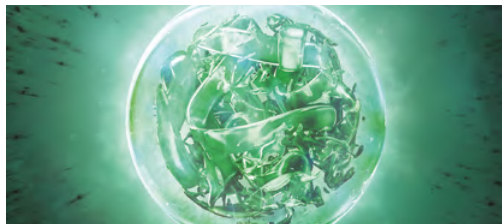
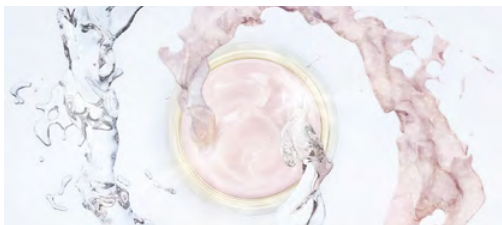
# DUALITY OF BIOTANIQE BRAND

TECHNOLOGISTS' KNOWLEDGE + COSMETOLOGISTS' EXPERIENCE AND PRUDENCE  
COOPERATION THAT ENSURES NEW QUALITY

Our expert team is a unique combination of the thorough knowledge of Polish technologists and the experience-based prudence of well-qualified cosmetologists. Together they designed not only highly advanced but also well-balanced formulations, perfectly adapted to the everyday needs of the skin.

## TECHNOLOGISTS' KNOWLEDGE

Biotaniqe formulations contain precisely selected ingredients which have been selected with great conscious. Our team of technologists has made sure that each preparation is effective and stimulated skin to regenerate.



## COSMETOLOGISTS' EXPERIENCE AND PRUDENCE

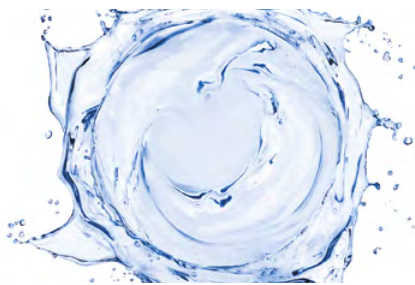
Profound education and daily professional contact with the needs of various skin types allowed our cosmetologists to develop safe and gentle formulations. Thanks to their experience, we can be certain that the final product is not only a laboratory creation, but, most importantly, it is a product adapted to the non-standard needs of our Clients.

## TWO-LEVEL EFFECT OF THE BIOTANIQE FORMULA PROBIOTIC WATER PRO.AQUA + BEST ACTIVE INGREDIENTS

Biotaniqe skin care products are also characterized by their unique double effect. They are more effective because they act on two levels. Their primary function is to strengthen the skin and support its natural self-defense mechanisms. Simultaneously, they provide a potent nurturing action resulting in improved look of the skin. Biotaniqe products contain a combination of the probiotic water pro.aQua and an innovative active ingredient. The double action of our cosmetics means they act with power and gentleness at the same time.

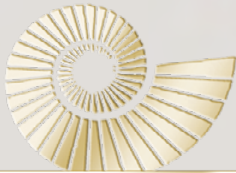
### PROBIOTIC WATER PRO.AQUA PROTECTION . COMFORT . RELIEF

Support of the natural processes in the skin. Lying at the core of all Biotaniqe preparations, pro.aQua is a mixture of fresh, purified water *Aqua Purificata* and probiotic technology. Pro.aQua is based on the multitude of benefits of *Lactobacillus Ferment Lysate* which selectively affects the skin's microorganisms. It limits the growth of pathogens responsible for irritations or acne and at the same time stimulates beneficial microflora which is a protective shield of the skin.



### INNOVATIVE ACTIVE INGREDIENT

An innovative active ingredient, which thanks to the technology used, has multiplied power to improve the appearance of the skin.



## SNAIL REPAIR THERAPY

**Biotanige Snail Repair Therapy** is an innovative line with double essence of the Snail Secretion Filtrate, designed for a strong regeneration effect.

### DOUBLE POWER OF REGENERATION!

The Essence of a Snail Secretion Filtrate (cryptosine), obtained from two types of snails (*Helix Aspersa Müller* and *Helix Pomatia*), delivers double power of natural active ingredients, easily assimilable by skin (collagen, elastin, enzymes, mucoproteins, allantoin, glycolic acid and vitamins A, C and E).

Effect:

- REJUVENATION • REGENERATION
- DEEP NOURISHING



DISCOVER MORE



INDEX: 4180

## ANTI-AGING BOOSTER

Probiotic water *pro.aQua*  
12% Snail Secretion Filtrate

- FIRMS THE SKIN
- REDUCES WRINKLES
- SMOOTHES

ALL SKIN TYPES | day/night | 30 ml

**Anti-Aging Booster** is an advanced formula with the power of a concentrated, repair ampoule, which helps reduce key signs of skin aging. It penetrates deep layers of the skin, where it stimulates renewal and rejuvenation processes. The skin becomes firmer, smoother, more elastic and well rested. It looks more radiant and even-toned. Wrinkles and fine lines are filled and visibly reduced.



INDEX: 4830

## SMOOTHING MAKE-UP BASE

Probiotic water *pro.aQua*  
2% Snail Secretion Filtrate | Niacinamide

- EVENS OUT THE SKIN TONE
- BRIGHTENS
- SKIN STRENGTHENING

ALL SKIN TYPES | day | 30 ml

**Smoothing Make-Up Base** effectively evens out the skin tone and subtly illuminates the skin. Niacinamide helps to eliminate discoloration, tightens the pores, strengthens and soothes the skin. Provides the complexion with radiance and vitality.



01 VANILLA  
INDEX: 4827

02 LIGHT BEIGE  
INDEX: 4828

03 GOLD BEIGE  
INDEX: 4829

## LIFTING FOUNDATION

Snail Secretion Filtrate  
Vitamin E

- PERFECT COVERAGE
- SATIN FINISH
- LONG LASTING EFFECT

ALL SKIN TYPES | day | 30 ml

**Lifting Foundation** perfectly blends with the skin due to a light, comfortable formula, ensuring ideal coverage without the mask effect. Provides a satin, long lasting makeup finish.



INDEX: 4044

## BIOACTIVE REGENERATING CREAM 30+

Probiotic water *pro.aQua*  
1% Snail Secretion Filtrate | Plant Acids AHA + BHA

- INTENSIVELY MOISTURISES
- FADES SCARS
- SMOOTHENS AND FIRMS SKIN

ALL SKIN TYPES | day/night | 50 ml

**BioActive Regenerating Cream** of a hydrogel formula intensively smooths and deeply moisturizes the skin. Evens out its tone and prevents first signs of aging.



INDEX: 4045

## DE-AGING REVITALISING CREAM 40+

Probiotic water *pro.aQua*  
1% Snail Secretion Filtrate | [3x] Ceramides

- SMOOTHENS WRINKLES
- INTENSIVELY MOISTURISES
- RESTORES ELASTICITY

ALL SKIN TYPES | day/night | 50 ml

**De-Aging Revitalising Cream** of hydrogel consistency, intensively moisturises, nourishes and smooths skin, to instantly improve its appearance. Eliminates signs of ageing. Boosts skin elasticity and reduces existing wrinkles. Smooths and rejuvenates skin structure. Gradually evens skin tone.



INDEX: 4046

## RADIANCE RESTORE EYE CREAM

Probiotic water *pro.aQua*  
1% Snail Secretion Filtrate | Caffeine | Vitamin E

- COMBATS DARK UNDER-EYE CIRCLES
- ELIMINATES WRINKLES

ALL SKIN TYPES | day/night | 15 ml

**Radiance Restore Eye Cream** counteracts visible signs of aging and fatigue in the eye area. Reduces wrinkles and prevents formation of new ones. Boosts skin hydration, smoothness and suppleness.



INDEX: 4036

### ULTRA LIFTING CREAM 50+

Probiotic water [pro.aQua](#)  
2% Snail Secretion Filtrate | Ginseng Extract

- LIFTS AND FIRMS SKIN
- REDUCES WRINKLES
- OXYGENATES SKIN CELLS

NORMAL AND DRY SKIN | day/night | 50 ml

**Ultra Lifting Cream** of a velvety, hydrogel formula intensely smooths the skin. Restores lost skin firmness and enhances luxurious softness from first application. Less visible wrinkles and lines.



INDEX: 4037

### ADVANCED REPAIR CREAM 60+

Probiotic water [pro.aQua](#)  
4% Snail Secretion Filtrate | Caviar Extract

- REVITALISES SKIN
- ELIMINATES WRINKLES
- LIFTS AND FIRMS SKIN

NORMAL AND DRY SKIN | day/night | 50 ml

**Advanced Repair Cream** of a velvet-like, hydrogel formula stimulates regeneration of support fibres, boosting skin firmness and suppleness of the skin. Improves face contour, softens facial features. Visibly reduces existing wrinkles.



INDEX: 4038

### GLOBAL ANTI-AGE CREAM 70+

Probiotic water [pro.aQua](#)  
6% Snail Secretion Filtrate | 24k Gold

- RESTORES SKIN DENSITY
- ELIMINATES WRINKLES
- EVENS SKIN TONE

NORMAL AND DRY SKIN | day/night | 50 ml

**Global Anti-Age Cream** of velvet-like consistency smooths and firms the skin, reduces wrinkles and evens skin tone from the very first application. The skin regains its original density and flexibility. The facial contour is visibly improved.



INDEX: 4048

### INTENSIVE NIGHT REPAIR CREAM/MASK

Probiotic water [pro.aQua](#)  
1% Snail Secretion Filtrate | 1% Marine Collagen

- INSTANTLY REJUVENATED
- SMOOTHENS AND SUPPLE SKIN
- LONG LASTING MOISTURE

ALL SKIN TYPES | night | 50 ml

**Intensive Night Repair Cream/Mask** - a revolutionary formula with the power of a highly concentrated mask. Acts overnight, when the skin is most receptive to repair and absorption of active ingredients.

HIT



INDEX-4039

## ANTI-WRINKLE LIFTING EYE CREAM

Probiotic water [pro.aQua](#)  
1% Snail Secretion Filtrate | 2% Hyaluronic Acid  
3% LIFTING COMPLEX 3D

- CROW'S FEET WRINKLES -33%
- DARK CIRCLES AND PUFFINESS -30%
- UPPER LID LIFTING +91%

ALL SKIN TYPES | day/night | 15 ml

**Anti-Wrinkle Lifting Eye Cream** reverses signs of ageing around eyes. Improves eye contour by lifting sagging upper eyelids. Visibly fades dark under-eye circles and diminishes puffiness around the eyes.



INDEX-4122

## SNAIL & GOLD 24K FIRMING SHEET MASK

Probiotic water [pro.aQua](#)  
Snail Secretion Filtrate | Gold 24k

- INTENSIVELY REGENERATES
  - SMOOTHES
- DEEPLY NOURISHES THE SKIN

ALL SKIN TYPES | day/night | 15 ml

**Snail & Gold 24k Firming Sheet Mask** contains a concentrated dose of rejuvenating substances, thanks to which it increases skin firmness and reduces wrinkles. Breathable, hypoallergenic, natural fiber is a combination of 100% cotton and unique vegetal Tencel®. Perfectly adapts to the shape of the face, providing a prolonged effect.



INDEX-4120

## SNAIL REGENERATING MASK

Probiotic water [pro.aQua](#)  
10% Snail Secretion Filtrate

- INTENSIVELY SMOOTHES
- FIRMS AND TONES THE SKIN

ALL SKIN TYPES | day/night | 10 ml

**Snail Regenerating Mask** is a concentrated nourishing treatment that provides skin with a real, instant metamorphosis. Intensively smoothes, firms and tones the skin. After the treatment, the complexion becomes naturally bright, smooth and perfectly moisturized.



INDEX-4445

## FIRMING MAKE-UP REMOVER WIPES

Probiotic water [pro.aQua](#) | Snail Secretion Filtrate

- INSTANTLY CLEANSING
- REMOVES MAKE UP
- BIODEGRADABLE
- COMPOSTABLE

ALL SKIN TYPES | day/night | 20 pcs

**Firming Make-Up Remover Wipes**, soaked with a cleansing micellar formula, instantly remove make-up and the impurities that settle on the skin during the day. Perfect for removing make-up from delicate areas around eyes and lips.

# PRO.AQUA HYDRA POWER



## INNOVATION! PROBIOTIC WATER PRO.AQUA

INNOVATION!

Biotaniqua Laboratories developed probiotic water that is unique in terms of its properties. **Pro.aQua** is the fusion of purified, fresh **Aqua Purificata** and the natural **Lactobacillus probiotic**. It provides soothing effect, supports the natural skin microbiome and strengthens its protective barrier. Enhances penetration of active substances to the skin, resulting in even greater effectiveness. The complexion becomes resistant to harmful external factors, less prone to redness and signs of aging.



DISCOVER  
MORE



INDEX: 9093



## HYDRATING DAY CREAM

Probiotic water pro.aQua  
Fermented Hyaluronic Acid

- INTENSIVELY MOISTURIZES
  - SMOOTHES
- FIRMS AND TONES THE SKIN

ALL SKIN TYPES | day/night | 50 ml

**Hydrating Day Cream**, formulated with pro.aQua probiotic water, provides real boost of hydration. Its ultra-light, fresh texture is quickly absorbed and releases the power of the active ingredients to the complexion. Perfect as a make-up base.

96% Ingredients of natural origin.

INDEX: 9094



## ANTI-AGE DAY AND NIGHT CREAM

Probiotic water pro.aQua  
Fermented Hyaluronic Acid | Peptides

- INTENSIVELY SMOOTHES
  - DEEPLY HYDRATES
- FIRMS AND REGENERATES

ALL SKIN TYPES | day/night | 50 ml

**Anti-Age Day and Night Cream**, formulated with pro.aQua probiotic water, is a rich, velvety formula that provides intensive smoothing, firming and regenerating effect. Boosts the skin with powerful dose of hydration and anti-aging active ingredients, restoring bright, more supple appearance.

98% Ingredients of natural origin.

INDEX: 9138



## NOURISHING NIGHT CREAM

Probiotic water pro.aQua  
Fermented Hyaluronic Acid | Vitamin E

- INTENSIVELY REGENERATES
  - SMOOTHES
- DEEPLY NOURISHES THE SKIN

ALL SKIN TYPES | day/night | 50 ml

**Nourishing Night Cream**, formulated with probiotic water pro.aQua, deeply moisturizes and regenerates the skin, immediately bringing back comfort and relief. Restores firmness, youthful glow and healthy appearance.

96% Ingredients of natural origin.

INDEX: 9095



## FIRMING EYE CREAM

Probiotic water pro.aQua  
Fermented Hyaluronic Acid

- DEEPLY MOISTURIZES
  - INTENSIVELY FIRMS
- PROVIDES FRESH AND RESTED LOOK

ALL SKIN TYPES | day/night | 15 ml

**Firming eye cream**, formulated with probiotic water pro.aQua, is a rich formula developed to fight signs of aging and fatigue appearing around the eyes. Deeply moisturizes and intensively firms the delicate skin. Provides fresh and rested look, just like after a good night sleep.

95% Ingredients of natural origin.



INDEX: 9096

## FIRMING SERUM

Probiotic water pro.aQua  
Peptides

- LIFTS AND FIRMS SKIN
- REDUCES WRINKLES
- INTENSIVELY HYDRATES

ALL SKIN TYPES | day/night | 20 ml

**Firming serum**, formulated with probiotic water pro.aQua, is a professional formula that with a power of a highly-concentrated ampoule reduces wrinkles, plumps the skin and prevents loss of firmness. Intensively hydrates and smoothes the fine lines and wrinkles. 97% Ingredients of natural origin.



INDEX: 9102

## ANTI-WRINKLE SHEET MASK

Probiotic water pro.aQua  
Peptides

- FIRMS THE SKIN
- REDUCES WRINKLES
- LIFTS AND REVITALIZES

ALL SKIN TYPES | day/night | 15 ml

**Anti-wrinkle sheet mask**, formulated with probiotic water pro.aQua, is a peptides formula developed to fight signs of aging and fatigue. Deeply moisturizes and intensively firms the delicate skin. Reduces fine lines and wrinkles. 97% Ingredients of natural origin.



INDEX: 9140

## ENZYMATIC PEELING

Probiotic water pro.aQua  
Papain | AHA | BHA

- EXFOLIATES
- SMOOTHES
- REFRESHES SKIN TONE

ALL SKIN TYPES | day/night | 8 ml

**Enzymatic peeling**, formulated with probiotic water pro.aQua, effective formula, gently exfoliates, smoothes, and cleanses the skin. Moisturizes, refreshes its tone, prevent imperfections. 97% Ingredients of natural origin.



INDEX: 9101

## HYDRATING CRYSTAL MASK

Probiotic water pro.aQua  
Allantoin

- DEEPLY MOISTURIZES
- SOOTHES SKIN
- FIRMS AND REGENERATES

ALL SKIN TYPES | night | 10 ml

**Hydrating crystal mask**, formulated with probiotic water pro.aQua, is an ultra-light gel formula that deeply moisturizes, gently cools and refreshes the skin. Instantly improves the condition and appearance of the skin. Provides fresh and rested look, just like after a good night sleep. 96% Ingredients of natural origin.



INDEX: 9099

## OIL-FREE TONER

Probiotic water pro.aQua  
Allantoin

- RESTORES NATURAL PH LEVEL
- DEEPLY CLEANSSES
- MOISTURIZES AND SMOOTHES

ALL SKIN TYPES | day/night | 150 ml

**Oil-free toner**, formulated with probiotic water pro.aQua, deeply cleanses, unclogs pores and removes impurities from the skin, restores its natural pH level. Moisturizes and smooths the skin. The toner prepares the skin for the following skin care treatment.

98% Ingredients of natural origin.



INDEX: 9100

## HYDRATING MIST

Probiotic water pro.aQua  
Betaine

- DEEPLY MOISTURIZES
- SOOTHES SKIN
- ELIMINATES IRRITATIONS

ALL SKIN TYPES | day/night | 100 ml

**Hydrating Mist**, formulated with probiotic water pro.aQua, gives immediate refreshment and soothing effect to the skin. Moisturizes, regenerates and eliminates irritation. Provides professional care, supporting natural skin microbiome. Restores radiant, smooth look.

98% Ingredients of natural origin.



INDEX: 9141

## COOLING MIST

Probiotic water pro.aQua  
Mint Extract

- DEEPLY MOISTURIZES
- REFRESHES
- SOOTHES IRRITATIONS

ALL SKIN TYPES | day/night | 100 ml

**Cooling Mist**, formulated with probiotic water pro.aQua, provides maximum hydration and refreshment to the skin. Mint Extract soothes irritations and smooths the skin.

97% Ingredients of natural origin.



INDEX: 9097

## SOOTHING MICELLAR WATER

Probiotic water pro.aQua

- INSTANTLY CLEANSING
- REMOVES MAKE UP
- SOOTHES AND MOISTURIZES

ALL SKIN TYPES | day/night | 400 ml

**Soothing micellar water**, formulated with probiotic water pro.aQua, is a light, non-greasy formula using micelle technology, that easily removes impurities and even strong make-up. Deeply moisturizes and revitalizes the skin. Soothes irritations, restores firmness and make the skin perfectly smooth.

97% Ingredients of natural origin.



INDEX: 9098

## MILD CLEANSING GEL

Probiotic water pro.aQua

- EFFECTIVELY CLEANSING
- UNCLOGS AND MINIMIZE THE PORES
- SMOOTHES AND MOISTURIZES

ALL SKIN TYPES | day/night | 200 ml

**Mild cleansing gel**, formulated with probiotic water pro.aQua, is a clear formula, which in contact with water transforms into a gentle foam. Effectively cleanses your skin. Instantly melts away all impurities, unclogs and minimizes pores. Deeply moisturizes, reduces unpleasant feeling of tight skin, leaving it smooth, fresh and glowing.

97% Ingredients of natural origin.

# CAVIAR

## LUXURY ANTI-AGING

Biotanique CAVIAR Luxury Anti-Aging is an advanced, prestigious line that owes its powerful anti-aging properties to a concentrated essence extracted from the luxury and nutrient-rich Black Caviar.



# CAVIAR

## LUXURY ANTI-AGING



### REGENERATING REPAIR CREAM

Probiotic water pro.aQua  
3% Black Caviar Extract | Pearl Extract

- PREVENTS OVERDRYING
- RESTORES FLEXIBILITY
- REGENERATES THE SKIN

ALL SKIN TYPES | day/night | 50 ml

**Regenerating Repair Cream** restores the firmness and elasticity of the skin. Prevents dryness and formation of wrinkles. Provides visible rejuvenation, intense hydration, smoothness and regeneration from the very first use. The formula enriched with **Pearl Extract** evens out the skin tone revealing velvety soft and exceptionally luminous complexion.



### FIRMING CREAM

Probiotic water pro.aQua  
3% Black Caviar Extract | 3% Peptide Complex | 24K Gold

- SMOOTHES WRINKLES
- LIFTING EFFECT
- BEAUTIFIES EYE AREA

ALL SKIN TYPES | day/night | 15 ml

**Firming Eye Cream** prevents dryness, loss of elasticity, wrinkles and dark circles under the eyes. **24K Gold** and **Peptides** provide a strong, lifting effect. The formula enriched with advanced **Soft Focus Pigments** gives a "blur" effect, revitalising and embracing the look, smoothing the wrinkles. Leaves the skin around the eyes incomparably smooth and velvety soft.

### BLACK CAVIAR REPAIRING POWER

**Black Caviar** is a precious, selected in accordance to size and colour raw material, known as the **Perfect Pearl of Nature**. The "ampoule" full of energy concentrates a high dose of **Peptides** (Arginine, Histamine, Isoleucine, Lysine, Methionine), **Unsaturated Fatty Acids** (Cholesterol, Lecithin) and **Vitamins** that are key in the rejuvenation process: A (Retinol), C, PP, B3, B2, B5, B6, B12. This youth cocktail is an extremely effective and luxurious therapy for mature skin.

# VIPER VENOM

## BOTULIN EFFECT

Biotanique Viper Venom are new generation cosmetics developed for a total non-invasive rejuvenation of mature skin.

The **advanced neuropeptide**, which mimics the activity of **Viper's Venom**, not only stops but also reverses signs of skin aging. It provides effective, non-invasive rejuvenation, visible to the naked eye.

Peptide, same as authentic viper venom, weakens the contraction of the subcutaneous muscles, which prevents fixing of expression lines of the skin. With the power of botox, it smoothes mimic wrinkles and blocks their deepening. As a result, the skin looks younger, becomes smooth and firm.



# VIPER VENOM BOTULIN EFFECT



INDEX-4205

## ANTI-WRINKLE CREAM

Probiotic water *pro.aQua*  
Viper Venom | Hyaluronic Acid

- REVERSES SIGNS OF AGING
  - REDUCES WRINKLES
  - FIRMS THE SKIN

ALL SKIN TYPES | day/night | 50 ml

**Anti-Wrinkle Cream** of a concentrated, hydrogel formula, reduces all signs of aging. Improves its elasticity and tightness. Reduces fine lines and wrinkles. Prevents skin sagging and loss of face contour.



INDEX-4206

## LIFTING CREAM

Probiotic water *pro.aQua*  
Viper Venom | Collagen

- REVERSES SIGNS OF AGING
- IMPROVES FACE CONTOUR
  - FIRMS THE SKIN

ALL SKIN TYPES | day/night | 50 ml

**Lifting Cream** of a concentrated, hydrogel formula, firms the skin and reshapes face contour. Replenishes fine lines and deep wrinkles. Prevents skin sagging and loss of firmness.



INDEX-4208

## EYE & LIP CONTOUR LIQUID FILLER

Probiotic water *pro.aQua*  
Viper Venom | Centella Asiatica

- REPLENISHES WRINKLES & LINES
  - FIRMS & LIFTS THE SKIN
  - REVERSES SIGNS OF AGING

ALL SKIN TYPES | day/night | 20 ml

**Eye & lip Contour Liquid Filler** is a concentrated formula which reverses signs of aging on these delicate areas. It eliminates swelling, puffy eyes and dark circles. Reshapes the eye contours, fills „crow's feet“, tightens the skin and visibly reduces wrinkles around the mouth.



INDEX-4407

## POWERFUL ANTI-WRINKLE EYE PADS

Viper Venom | 3Peptygen Complex

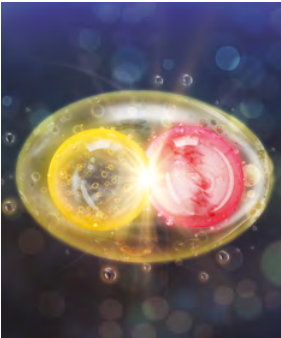
- FILL UP WRINKLES
- TIGHTEN AND FIRM THE SKIN
- VISIBLY SMOOTH THE EYE AREA

ALL SKIN TYPES | day/night | 2 pcs

**Powerful Anti-Wrinkle Eye Pads** instantly improve the condition and appearance of the skin under the eyes. They release a concentrated dose of youth ingredients into the skin, instantly reducing the signs of aging and fatigue, smoothing and tightening the complexion.

# VIT C AGE CONTROL

**Biotaniqe Vit C Age Control** is a line based on the powerful rejuvenating, repairing and brightening effect of Vitamin C.



INNOVATION:

## BioC<sup>8</sup>

Directly after application, activated by your body heat, thousands of elastic bioC<sup>8</sup> liposomes, begin an 8-hour process of releasing two highly-concentrated vitamins C, levorotatory and botanical – extracted from the unique CamuCamu berries, to the deepest layers of the skin. CamuCamu berries are famous for their immense vitamin C concentration (3000 mg/100 g berries) and high antioxidative activity.



INDEX: 9134

## FACE CLEANSING GEL

Vitamin C  
Probiotic water pro.aQua

- REMOVES IMPURITIES
- BRIGHTENS AND SMOOTHES THE SKIN

ALL SKIN TYPES SKIN | day/night | 250 ml

Face Cleansing Gel is a crystal clear formula, which in contact with water transforms into a gentle microfoam, effectively cleansing the skin. Its light formula delicately purifies the complexion and takes care of it with the power of a rejuvenating vitamin essence.



INDEX: 4041

## FIRST WRINKLES ENERGISING CREAM 30+

Probiotic water pro.aQua  
BioC<sup>8</sup> liposomes\*  
Alpha Hydroxy-Acids (AHA)

- BRIGHTENS SKIN
- ELIMINATES SIGNS OF FATIGUE

ALL SKIN TYPES | day/night | 50 ml

**First Wrinkles Energising Cream** is a soft texture cream that intensively brightens and energises the skin. Helps combat first signs of ageing. Reduces existing wrinkles and prevents new ones from forming. Deeply hydrates the skin and instantly gives it a radiant and relaxed look.



INDEX: 4062

## REJUVENATING EYE CREAM

Probiotic water pro.aQua  
BioC<sup>8</sup> liposomes\* | Argan Oil & Vitamin E

- DIMINISHES UNDER-EYE WRINKLES AND SIGNS OF FATIGUE

ALL SKIN TYPES | day/night | 15 ml

**Rejuvenating Eye Cream** is a highly concentrated formula that boosts repair processes in the most delicate under-eye skin showing signs of ageing and fatigue. Light cream that lifts the skin with the force of botox, eliminates wrinkles and restores eye contour.



INDEX: 4061

## ADVANCED LIFTING SERUM

Probiotic water pro.aQua  
10% BioC<sup>8</sup> liposomes\* | Prickly Pear Oil

- INTENSIVELY LIFTS AND FIRMS SKIN
- REDUCES WRINKLES

ALL SKIN TYPES | day/night | 20 ml

**Advanced Lifting Serum** is a highly-concentrated dose of rejuvenating power that from the very first application restores skin smoothness, softness and proper flexibility. The light, non-greasy formula regulates and rejuvenates the skin.

\*BioC<sup>8</sup> liposomes provides for as much as 8h of unique levorotatory and botanic vitamins C supply on the skin





# CBD oil

## ANTI-AGING THERAPY

CBD oil is a natural, multifunctional treatment, that instantly improves the condition of the skin and visibly rejuvenates it.



DISCOVER  
MORE

### INNOVATION IN NATURAL SKIN REJUVENATION!

INNOVATION:

CBD OIL (*Cannabidiol*) is an organic active ingredient extracted from hemp. It is characterized by a high content of linoleic acid (LA) and alfa-linolenic acid (ALA) as well as vitamins A, E and K. It provides the skin with multilevel care: slows down and prevents cell aging, supports natural defense mechanisms, protects against free radicals and visibly rejuvenates the skin.



## REGENERATING MAKE-UP REMOVER WIPES

CBD- 99% Organic Hemp Oil  
Probiotic water [pro.aQua](#)

- REMOVES MAKE UP
- UNCLOGS PORES
- BIODEGRADABLE
- COMPOSTABLE

ALL SKIN TYPES | day/night | 20 pcs

Regenerating Make-Up Remover Wipes, soaked with a cleansing, oil-free formula, easily removes make-up, residual impurities and sebum. They effectively refresh and moisturise the skin. Perfect for removing make-up from delicate areas around eyes and lips.



## ALL-IN-ONE REGENERATING OIL

CBD- 99% Organic Hemp Oil  
Moringa oil | Vitamin E

- DEEPLY REVITALIZES AND NOURISHES
- REDUCES WRINKLES
- EVENS SKIN TONE

ALL SKIN TYPES | day/night | 30 ml

All-In-One Regenerating Oil is a 99% natural, miracle, multifunctional elixir that owes its powerful properties to the unique composition of organic hemp CBD Oil, the rich Moringa Oil, Sweet Almond Oil and a large dose of Vitamin E. The light, non-greasy formula has a strong antioxidant effect, visibly reduces the signs of aging.



## RESTORATIVE ANTI-WRINKLE DAY CREAM

Probiotic water [pro.aQua](#)  
CBD- 99% Organic Hemp Oil

- REDUCES WRINKLES
- SOOTHES AND PROTECTS SKIN
- REGENERATES AND NOURISHES

ALL SKIN TYPES SKIN | day/night | 50 ml

Restorative Anti-Wrinkle Day Cream with organic CBD oil and light, hydrogel consistency, effectively reduces wrinkles, firms and smoothes the skin. Supports cell renewal processes, which help the skin to look young and radiant. The cream is a perfect makeup base, it does not leave a greasy layer and does not clog pores.



## ANTI-WRINKLE NIGHT CREAM/MASK

Probiotic water [pro.aQua](#)  
CBD- 99% Organic Hemp Oil

- REGENERATES AND NOURISHES
- SMOOTHES AND FIRMS THE SKIN
- REDUCES IMPERFECTIONS

ALL SKIN TYPES | night | 50 ml

Anti-Wrinkle Night Cream/Mask with organic CBD oil and rich, velvety texture deeply nourishes the skin during sleep, when the most intensive cell renewal processes last. It gradually releases a concentrated dose of beneficial, strongly rejuvenating active ingredients. Firms, tightens and smoothes the skin, giving it a radiant, rested look from the very morning.



INDEX-4322

## DEEP CLEANSING PEELING

Probiotic water *pro.aQua*  
 CBD- 99% Organic Hemp Oil  
 Mandelic Acid | Ground Walnut Shells

- REDUCES IMPERFECTIONS
- PREVENT BLACKHEADS
- HYDRATES THE SKIN

ALL SKIN TYPES | day/night | 75 ml

**Deep Cleansing Peeling** is a professional formula for multilevel, deep skin purification: **Mandelic Acid** dissolves dead cells and intensely smoothes the skin. **Ground Walnut Shells** unclog pores and prevent blackheads. **CBD Organic Hemp Oil** reduces imperfections due to its anti-bacterial and anti-inflammatory properties.



INDEX-4292

## REGENERATING JELLY MASK

Probiotic water *pro.aQua*  
 CBD- 99% Organic Hemp Oil

- INTENSIVELY REVITALIZES
- FIRMS AND TONES THE SKIN
- MOISTURIZES THE SKIN

ALL SKIN TYPES | day/night | 10 ml

**Regenerating Jelly Mask** is concentrated nourishing treatment which provides instant renewal to tired, dull skin with visible signs of aging. Intensely smoothes, moisturizes and nourishes the skin – after the treatment it becomes flexible, radiant and well rested.



INDEX-4369

## CBD CLEANSING TONER

Probiotic water *pro.aQua*  
 CBD- 99% Organic Hemp Oil  
 Witch Hazel

- REMOVES IMPURITIES
- UNCLOGS AND TIGHTENS PORES
- PREVENTS IMPERFECTIONS

ALL SKIN TYPES | day/night | 150 ml

**CBD Cleansing Toner** removes impurities, unclogs and tightens pores, restores the skin's natural pH. Regulates sebum secretion and prevents imperfections. Supports renewal of the epidermis.



INDEX-4321

## CBD MICELLAR WATER

Probiotic water *pro.aQua*  
 CBD- 99% Organic Hemp Oil

- DEEPLY CLEANSES
- TIGHTENS PORES
- PREVENTS THE SKIN FROM DRYING OUT

ALL SKIN TYPES | day/night | 400 ml

**CBD Micellar Water** is a light formula that effectively removes makeup, daily impurities and excess sebum, due to micellar technology. Prevents imperfections, deeply cleanses and tightens pores. This mild formula prevents the skin from drying out, it becomes purified, refreshed and moisturized.



INDEX-4368

## GENTLE CLEANSING GEL

Probiotic water *pro.aQua*  
 CBD- 99% Organic Hemp Oil

- REMOVES IMPURITIES
- UNCLOGS PORES
- REDUCES IMPERFECTIONS

ALL SKIN TYPES | day/night | 250 ml

**Gentle Cleansing Gel** effectively removes impurities and makeup residue, without affecting skins natural protective barrier. In contact with water the light formula transforms into a delicate microfoam that instantly cleanses, detoxifies and unclogs pores. The gel helps to reduce imperfections, the skin looks younger and healthier.





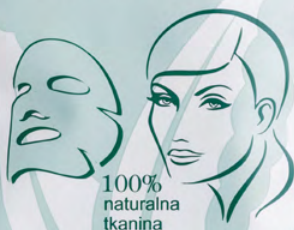
**BIOTANIQE**<sup>®</sup>  
DERMOSKIN EXPERT

**NAWILŻAJĄCO-KOJĄCA  
MASKA NA TKANINIE**

**ALOE VERA**

**40%** NATURALNEGO  
SOKU Z ALOESU

Kwas Hialuronowy & pro.aQua  
90% składników naturalnych



100%  
naturalna  
tkanina

**SOOTHING HYDRATING  
SHEET MASK**

**40%** PURE  
ALOE JUICE

Hyaluronic Acid & pro.aQua  
90% natural ingredients

# ALOE VERA



Pure Aloe Juice has been used for thousands of years as a natural remedy for various skin ailments.

INNOVATION:

## NATURAL ALOE JUICE:

- soothes irritated skin, relieves inflammation, accelerating their regeneration,
- thoroughly nourishes and revitalizes the epidermis,
  - moisturizes deep layers of the skin,
  - has antibacterial and anti-acne properties,
  - slows down the signs of aging.



INDEX: 4138

## ALOE CLEANSING GEL

Probiotic water [pro.aQua](#)  
20% Pure Aloe Juice | Citrus Extract

ALL SKIN TYPES | day/night | 250 ml

Aloe Cleansing Gel is a crystal clear formula, which is contact with water transforms into a gentle microfoam. Based on mild surfactants, effectively cleanses your skin. Instantly melts away all impurities, unclogs and minimizes pores.



INDEX: 4764

## MOISTURIZING MAKE-UP REMOVAL WIPES

Probiotic water [pro.aQua](#)  
Aloe Vera Juice | D-Panthenol

ALL SKIN TYPES | day/night | 25 pcs

Moisturizing make-up removal wipes, soaked with gentle micellar water, immediately and effectively remove make-up and all impurities, leaving the complexion refreshed and purified. Biodegradable, compostable wipes are made of plant-based fibre.



INDEX: 4210

INDEX: 4698

## ALOE MICELLAR WATER

Probiotic water [pro.aQua](#)  
100% Pure Aloe Water

ALL SKIN TYPES | day/night | 400 ml | 100 ml

Aloe Micellar Water is a light, non-greasy formula using micromicelle technology, that easily removes impurities and even strong make-up. Based on natural **Aloe Water** and **probiotic water pro.aQua**, it provides the skin with fresh and radiant look.



INDEX: 4848

## ALOE BI-PHASE MAKEUP REMOVER

Probiotic water [pro.aQua](#)  
100% Pure Aloe Water | Sweet Almond Oil

ALL SKIN TYPES | day/night | 150 ml

Aloe Bi-Phase Makeup Remover effectively removes even strong and waterproof makeup without rubbing. Gentle, nourishing formula cares for the eyes area and the eyelashes. Does not leave greasy residue on the skin.



## ALOE HYDRATING SERUM

Probiotic water *pro.aQua*  
40% Pure Aloe Juice | Hyaluronic Acid

ALL SKIN TYPES | day/night | 20 ml

**Aloe Hydrating Serum** – the concentrated „shot“ of moisture, which instantly boosts the skin hydration and retains it all day long. The lightweight and refreshing formula is easily absorbed, releasing precious active ingredient into the deepest layers of the skin. Effectively quenches the thirst of any skin type, immediately restores its comfort and relief.



## DEEPLY HYDRATING GEL CREAM

Probiotic water *pro.aQua*  
40% Pure Aloe Juice | Hyaluronic Acid

ALL SKIN TYPES | day/night | 50 ml

**Deeply Hydrating Gel Cream** – light and natural cream formula ensures deep moisturization and nourishment. It smooths the skin and provides the optimal level of skin hydration. Fresh and hydrogel texture is instantly absorbed and releases its richness to the skin.



## HYDRATING MATTIFYING GEL CREAM

Probiotic water *pro.aQua*  
40% Pure Aloe Juice | Rice Powder

ALL SKIN TYPES | day/night | 50 ml

**Hydrating Mattifying Gel Cream** – light, natural formula of the cream deeply moisturizes, mattifies and smooths the skin, preventing it from shining. Fresh and hydrogel texture is instantly absorbed and releases its richness to the skin.



## SOOTHING HYDRATING SHEET MASK

Probiotic water *pro.aQua*  
40% Pure Aloe Juice | Hyaluronic Acid

ALL SKIN TYPES | day/night | 15 ml

**Soothing Hydrating Sheet Mask** is like a moisturizing-soothing dressing for dry, sensitive and irritated skin. **40% natural Aloe Vera Juice**, reduces wrinkles, intensively hydrates, firms and illuminates the skin. The **breathable, 100% natural cloth** perfectly fits the contours of your face to ensure the best possible penetration of the active ingredients.



## HYDRATING JELLY MASK

Probiotic water *pro.aQua*  
90% Pure Aloe Juice

ALL SKIN TYPES | day/night | 12 ml

**90% of Pure Aloe Vera Juice** in a form of an ultra-light gel mask of fresh, juicy consistency intensively moisturizes, gently cools and refreshes the skin. Restores skin's hydrobalance. Instantly improves the condition and appearance of the skin. Effectively hydrates skin of all types and provides it with immediate comfort and relief.





# PURE DETOX

PURE DETOX is a line designed to instantly and deeply cleanse the skin of impurities and toxins.



INNOVATION!

## CHARCOAL SKIN DETOX



Active Charcoal attracts impurities like a magnet and absorbs them thanks to its porous structure. Helps to remove toxins accumulated in the skin. Neutralizes the impact of harmful external factors responsible for skin imperfections.



INDEX: 4055

### CHARCOAL CLEANSER

Probiotic water [pro.aQua](#)  
Active Urame Oak Charcoal (*Quercus Phillyraeoides L.*)

- **MELTS AWAY IMPURITIES & MAKEUP**

ALL SKIN TYPES | day/night | 250 ml

Charcoal Cleanser is an innovative formula, which on contact with the skin transforms into a gentle microfoam and immediately dissolves makeup and impurities. Deeply cleanses and detoxifies skin. Fluid-like consistency leaves skin silky-smooth, moist and perfectly clean. Provides you with pleasant feeling of refreshment.



INDEX: 4071



INDEX: 4072

best seller

### CHARCOAL BLACK MASK PEEL-OFF

Probiotic water [pro.aQua](#)  
Active Urame Oak Charcoal | Botanical Wild Rose Extract

- **REMOVES IMPURITIES & DEAD SKIN CELLS**
  - **CLEANSSES PORES, ABSORBS SEBUM**
  - **SMOOTHENS AND DETOXIFIES SKIN**

ALL SKIN TYPES | day/night | 8ml/50 ml

Charcoal Black Mask Peel-Off immediately unclogs and shrinks enlarged pores, absorbs excess sebum, removes dead skin cells and prevents imperfections. The skin becomes radiant, regains even skin tone and healthy look. Instant effect of refreshed, deeply cleansed and softened skin.



INDEX: 4056

HIT

### CHARCOAL PEELING-GEL-MASK 3IN1

Probiotic water [pro.aQua](#)  
Active Bamboo Charcoal (*Bambusa Arundinacea L.*)  
Kaolin Clay | Silica Micropearls | Papain

- **SMOOTHENS AND DETOXIFIES SKIN**

ALL SKIN TYPES | day/night | 150 ml

Charcoal Peeling – Gel – Mask 3in1 is a multifunctional formula that ensures profound and intensive peeling and cleansing action. Nourishes skin back to healthy-looking and natural radiance.





BIOTANIQUE®

DERMOSKIN EXPERT

ŁAGODNY ŻEL  
DO MYCIA TWARZY

MICRO  
PURIFYING

DOGŁĘBNIIE OCZYSZCZA I TONIZUJE

woda probiotyczna pro.aQua  
Botaniczny Wyciąg z Orchidei  
(Orchis Masculina L.)

GENTLE FOAMING  
FACE CLEANSER

DEEPLY CLEANSES AND TONES

probiotic water pro.aQua  
Botanical Orchid Extract  
(Orchis Masculina L.)



BIOTANIQUE®

DERMOSKIN EXPERT

ŁAGODNY ŻEL  
DO MYCIA TWARZY

MICRO  
PURIFYING

DOGŁĘBNIIE OCZYSZCZA I TONIZUJE

woda probiotyczna pro.aQua  
Botaniczny Wyciąg z Orchidei  
(Orchis Masculina L.)

GENTLE FOAMING  
FACE CLEANSER

DEEPLY CLEANSES AND TONES

probiotic water pro.aQua  
Botanical Orchid Extract  
(Orchis Masculina L.)

# MICRO PURIFYING

Micro Purifying collection focuses on tonizing, soothing and cleansing skin from imperceptible microimpurities.



best  
seller

INDEX-4017

## MINERAL GOMMAGE PEELING 2IN1

Probiotic water pro.aQua

Double peeling action: Silica Micropearls, Papaya Enzyme, Kaolin, and Botanical Peony Extract (*Paeonia Lactiflora* L.)

- PROMOTES CELL RENEWAL

ALL SKIN TYPES | day/night | 75 ml

**Mineral Gommage Peeling 2 in 1** combines two peeling actions: enzymatic – deep and abrasive - acting on the skin surface. The creamy clay formula with micropearls leaves the epidermis deeply purified and elastic.



INDEX-4018

## GENTLE FOAMING FACE CLEANSER

Probiotic water pro.aQua

Botanical Orchid Extract (*Orchis Mascula* L.)

- DEEPLY CLEANSES AND TONES

ALL SKIN TYPES | day/night | 250 ml

**Gentle Foaming Face Cleanser** is a crystal clear formula which on contact with water transforms into a gentle microfoam, effectively cleansing your skin. Innovative active ingredients minimize pores, providing the skin with comfort and freshness.



INDEX-4185

## ROSE CLEANSING TONER

Probiotic water pro.aQua  
Rose Water | Alpha Hydroxy Acids

ALL SKIN TYPES | day/night | 150 ml

**Rose Cleansing Toner** deeply cleanses, unclogs and removes impurities from the skin. Restores its natural pH level after the cleansing ritual. Smooths and moisturizes the skin. The toner prepares the skin for the following skin care treatment.



INDEX-4763

## CLEANSING MAKE-UP REMOVAL WIPES

Probiotic water pro.aQua  
Rose Water

ALL SKIN TYPES | day/night | 25 pcs

**Make-up Removal Wipes**, soaked with professional micellar formula, immediately and effectively remove make-up and all impurities, leaving the complexion refreshed and soothed. Biodegradable, compostable wipes are made of plant-based fibre.



INDEX-4847

## ROSE BI-PHASE MAKEUP REMOVER

Probiotic water pro.aQua  
Rose Water | Monoi Oil

ALL SKIN TYPES | day/night | 150 ml

**Rose Bi-Phase Makeup Remover** easily and effectively removes even strong and waterproof makeup without rubbing. Delicate, soothing formula cares for the eyes area and the eyelashes. Does not leave greasy residue on the skin.

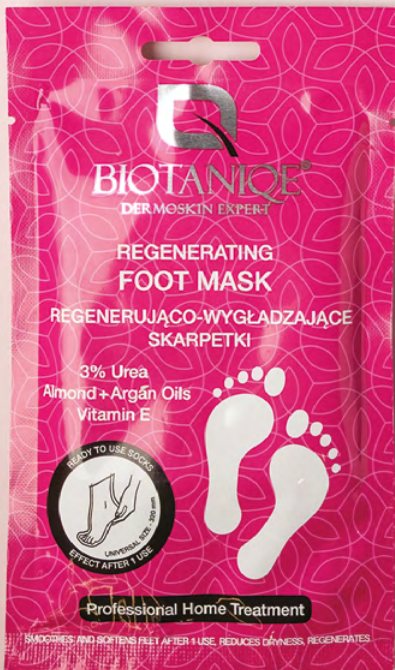




# HANDS AND FEET CARE



Don't forget about hands and feet during everyday care. The results of beautiful, soft skin provide us with comfort and satisfaction.







## REGENERATING HAND CREAM

Probiotic water pro.aQua  
Glycerin | Allantoin

day/night | 75 ml

**Regenerating Hand Cream** immediately brings relief to dry and chapped hands. Gives pleasant softness and smoothness, after the first use. The concentrated, repair formula has an intensive regenerating effect, restores comfort, reduces redness and roughness of the skin. Quickly-absorbing consistency does not leave a sticky layer.



## DEEP MOISTURIZING CREAM FOR HANDS AND NAILS

Probiotic water pro.aQua  
Jojoba Oil | Sweet Almond Oil

day/night | 75ml

**Deep Moisturizing Cream for Hands and Nails** is a fast-absorbing, intensive formula that deeply nourishes very dry and damaged hand skin. Restores the ideal level of hydration, leaving the skin soft, elastic and smooth. Supports the regeneration of cuticles and nails and gives them healthy look.



## INTENSIVE REGENERATING HAND MASK

Argan Oil | Allantoin  
Glycerin

day/night | 2x15 ml

Soaked, ready-to-use **Intensive Regenerating Hand Mask** is a professional treatment for self-use at home. Thanks to the composition of active ingredients: Argan Oil, Allantoin, Glycerine the gloves regenerate and moisturize very dry skin of the hand. Guarantees effect after 1 use.



## DEEP MOISTURIZING MASK FOR HANDS AND NAILS

Jojoba Oil | Sweet Almond Oil  
Hyaluronic Acid

day/night | 2x15 ml

Soaked, ready-to-use **Deep Moisturizing Mask for Hands and Nails** are a professional treatment for self-use at home. Thanks to the composition of active ingredients: Jojoba Oil, Sweet Almond Oil, Hyaluronic Acid, the gloves deeply hydrate and smooth dry skin of the hand. Guarantees effect after 1 use.

INDEX-4885



## CALLUS REMOVER

Probiotic water pro.aQua  
6% Glycolic Acid | 8% Lactic Acid  
1% Salicylic Acid

day/night | 75 ml

**Callus Remover** is an innovative formula that immediately removes hard and thickened skin. Leaves the feet baby-soft and smooth after just 1 use. Provides professional pedicure without specialized tools or long exfoliation process. The **15% AHA + BHA** instantly dissolves dead epidermis and stimulates cell renewal.

INDEX-4884



## INTENSIVELY SOFTENING FOOT CREAM

Probiotic water pro.aQua  
15% Urea | 5% Glycerin  
2% Shea Buttera

day/night | 75 ml

**Intensively Softening Foot Cream** is a professional formula that smoothes and softens damaged feet. It provides boost of hydration and nourishment to the epidermis, preventing from calluses.

INDEX-4771



## EXFOLIATING FOOT MASK

5,7% AHA + BHA  
5% Urea | Lemon Extract

day/night | 2x15 ml

Soaked, ready-to-use **Exfoliating Foot Mask** are a professional treatment for self-use at home.

Thanks to the composition of active ingredients: 5,7% AHA + BHA, 5% Urea and Lemon Extract removes thickened skin and dead epidermis. Guarantees smoothing and softening effect, prevents calluses formation.

INDEX-4772



## REGENERATING FOOT MASK

3% Urea | Argan Oil  
Almond Oil | Vitamin E

day/night | 2x15 ml

Soaked, ready-to-use **Regenerating Foot Mask** are a professional treatment for self-use at home. Thanks to the composition of active ingredients: 3% Urea, Argan Oil, Almond Oil and Vitamin E, the socks instantly reduce roughness and chapped skin of the feet. Guarantees the smoothing, softening and deep regeneration effect after the first use.



# ONSKIN

BY BIOTANIQE



VEGAN  
FORMULA



LOVE  
ANIMALS



LIGHT  
TEXTURE



DERMATOLOGICALLY  
TESTED

The ON SKIN line, developed by specialists, takes daily skincare to a higher level. Easy to use, multitasking, luxurious formulas contain high doses of active ingredients with spectacular properties.

Every cosmetic is based on probiotics that protect the natural skin microflora, keeping it in balance.

The cosmetics are packed with benefits and perfect for all skin types. Reduce imperfections and allow to gain flawless skin with a healthy glow.



## REGENERATING SHEET MASK

1% Zinc | 7% Niacinamide  
Squalane | Probiotic

ALL SKIN TYPES | day/night | 15 ml

**REGENERATING SHEET MASK** deeply nourishes, moisturizes and supports the skin regeneration process due to the content of 7% Niacinamide, 1% Zinc and Squalane. Smoothness, firmness and healthy tone are restored to the skin. Enriched with probiotics. Vegan formula. Natural, biodegradable fabric.



## HYDRATING SHEET MASK

Ceramides | 7% Niacinamide  
Hyaluronic Acid | Probiotic

ALL SKIN TYPES | day/night | 15 ml

**HYDRATING SHEET MASK** provides long-lasting hydration of the skin and prevents transepidermal water loss due to the content of 7% Niacinamide, Ceramides and Hyaluronic Acid. Enriched with probiotics. Vegan formula. Natural, biodegradable fabric.



## FOAMING FACE WASH

Zinc | 2% Niacinamide  
Squalane | Probiotic

ALL SKIN TYPES | day/night | 150 ml

**FOAMING FACE WASH** is a pampering formula, which on contact with water transforms into a gentle microfoam, effectively cleansing the skin and removing even strong makeup. Formulated with 2% Niacinamide, Zinc, Squalane and Probiotics maintains natural moist in the skin. Restores its comfort and smoothness. Minimizes pores and prevents imperfections. Vegan.



## RICH TONER

Glycolic Acid | 2% Niacinamide  
Squalane | Probiotic

ALL SKIN TYPES | day/night | 150 ml

**RICH TONER** is an innovative, oil-free 2in1 formula: a regulating toner and a moisturizing serum. It tightens pores, prevents imperfections and hydrates the skin. The complexion becomes radiant and even. The gel, refreshing texture is instantly absorbed. Vegan, non-comedogenic.



## ENZYMATIC PEELING

Zinc | 2% Niacinamide  
Mandelic Acid | Probiotic

ALL SKIN TYPES | day/night | 75 ml

**ENZYMATIC PEELING** exfoliates, smoothes and cleanses the skin. Refreshes its tone, prevents imperfections. Vegan.



## DAILY SORBET MOISTURIZER

Ceramides | 5% Niacinamide,  
Hyaluronic Acid | Probiotic

ALL SKIN TYPES | day/night | 50 ml

**DAILY SORBET MOISTURIZER**, designed for normal and combination skin with 5% Niacinamide, Hyaluronic Acid and Ceramides, deeply moisturizes and naturally mattes the skin. Perfect as a makeup base. Vegan formula.



## PERFECTING CREAM

Zinc | 7% Niacinamide  
Squalane | Probiotic

ALL SKIN TYPES | day/night | 50 ml

**PERFECTING CREAM**, designed for problematic skin, with 7% Niacinamide, Zinc and Squalane, supports the skin regeneration process and prevents from new imperfections. Perfect as a makeup base. Contains probiotics. Vegan formula.



## PERFECTING SERUM

1% Zinc | 15% Niacinamide  
Probiotic

ALL SKIN TYPES | day/night | 20 ml

**PERFECTING SERUM** is a multifunctional formula for problematic skin, which supports regeneration process and prevents imperfections. Due to the combination of 15% Niacinamide, 1% Zinc and Probiotics, it effectively reduces the visibility of imperfections, pores and sebum. Smoothes and evens out the complexion, improving its appearance.

# ONSKIN

BY BIOTANIQE









**Biotanique Ecologi** is an innovative line based on balance and ecological ideology. It gives the opportunity to get closer to the world of pure nature, support environmental balance, slowing down the rhythm of life, showing respect to the body and spirit. Light textures and simple compositions make the skin feel fresh and naturally beautiful and strong.



### CALMING MICELLAR WATER

Probiotic | Linden Blossom Extract

FACE • EYES • LIPS | 300 ml

Exceptionally mild and effective formula with micelle technology for daily skin care and cleansing. Allows to easily remove everyday impurities and even strong, waterproof makeup. Supports the skin protective barrier, increasing its resistance to irritation and the effects of external factors. Soothes and calms the skin prone to redness.



### PURIFYING MICELLAR WATER

Probiotic | Witch Hazel

FACE • EYES • LIPS | 300 ml

Exceptionally mild and effective formula with micelle technology for daily skin care and cleansing. Allows to easily remove everyday impurities and even strong, waterproof makeup. Prevents imperfections, deeply cleanses and tightens pores. Immediately restores the skin's balance, detoxifies and refreshes.



### MOISTURIZING MICELLAR WATER

Probiotic | Olive Squalane

FACE • EYES • LIPS | 300 ml

Exceptionally mild and effective formula with micelle technology for daily skin care and cleansing. Allows to easily remove everyday impurities and even strong, waterproof makeup. Supports the structure of skin lipids, reducing the tendency to dry out due to excessive water loss. Helps to restore firmness and radiance.



## PROTECTIVE INTIMATE GEL WASH

Lactic Acid | Probiotic | Cranberry Extract

FOR EVERYDAY USE | 300 ml

**Hypoallergenic Protective intimate gel wash** for the daily care of sensitive intimate areas. Received a **positive gynecological and dermatological assessment**. Gently cleanses the skin, providing a long-lasting feeling of refreshment and comfort. Inhibits the growth of microorganisms responsible for the development of intimate infections, discomfort, itching and burning. Provides an adequate level of hydration, protects against drying. Neutralizes unpleasant odors.



## REGENERATING INTIMATE OIL

6 Natural Oils  
Jojoba | Tamanu | Almond | Sunflower | Apricot | Tea Tree

FOR EVERYDAY USE | 90 ml

**Regenerating intimate oil** is a multifunctional elixir containing 6 natural oils. Intensively moisturizes and regenerates the skin, eliminates ingrown hairs after depilation. Soothes inflammation, prevents imperfections, dryness and infections. Reduces discoloration, tones the skin of the hips and buttocks, protecting against the stretch marks.



## REGENERATING INTIMATE GEL WASH

Lactic Acid | Probiotic | Chamomile

FOR EVERYDAY USE | 300 ml

**Hypoallergenic Regenerating Intimate Gel Wash** for the daily care of sensitive intimate areas. Received a **positive gynecological and dermatological assessment**. Gently cleanses the skin, providing a long-lasting feeling of refreshment and comfort. It owes its properties to the combination of mild, plant origin cleaning substances with natural active ingredients. Inhibits the growth of microorganisms responsible for the development of intimate infections, discomfort, itching and burning.



## MOISTURIZING INTIMATE WASH EMULSION

Lactic Acid | Probiotic | Aloe Vera

FOR EVERYDAY USE | 300 ml

**Hypoallergenic Moisturizing Intimate Wash Emulsion** for the daily care of sensitive intimate areas. Received a **positive gynecological and dermatological assessment**. Gently cleanses the skin, providing a long-lasting feeling of refreshment and comfort. Inhibits the growth of microorganisms responsible for the development of intimate infections, discomfort, itching and burning. Provides an adequate level of hydration, protects against drying. Neutralizes unpleasant odors.



**Antibacterial formula** property to inhibit the growth of microorganisms, which are responsible for intimate ailments, such as bacteriosis, mycosis, itching, burning, dryness.



Over 98% ingredients of natural origin, which means they were obtained from natural raw materials. The remaining 3% are preservatives that ensure the durability of the cosmetic.



**VEGAN** not tested on animals, does not contain ingredients of animal origin.



**Gynecologically tested** application tests conducted under the supervision of a dermatologist and gynecologist.



BIOTANIQE<sup>®</sup>  
ECOLOGIQ

98%  
składników pochodzących z natury



Nawilżająca  
emulsja do higieny  
intymnej

Hipoalergiczna  
fizjologiczne pH

KWAS MLEKOWY • PROBIOTYK  
WYCIĄG Z ALOE VERA





**BIOTANIQUE**<sup>®</sup>  
ECOLOGIQ

## *Natural colouring system*

100% vegan formula

Up to 90% natural derived ingredients

Plant Keratin regenerates, protects  
and hydrates hair fibre during the treatment

Botanical extracts (chamomile, walnut,  
pomegranate) enhance hair tone

Ammonia, oxidants, resorcinol, PPD free

## *Super simple and fast to use*

Ready-to-use gel formula

Does not require an activator

No risk of damaging hair fibres

Without unpleasant smell

Does not cause itching of scalp and eyes

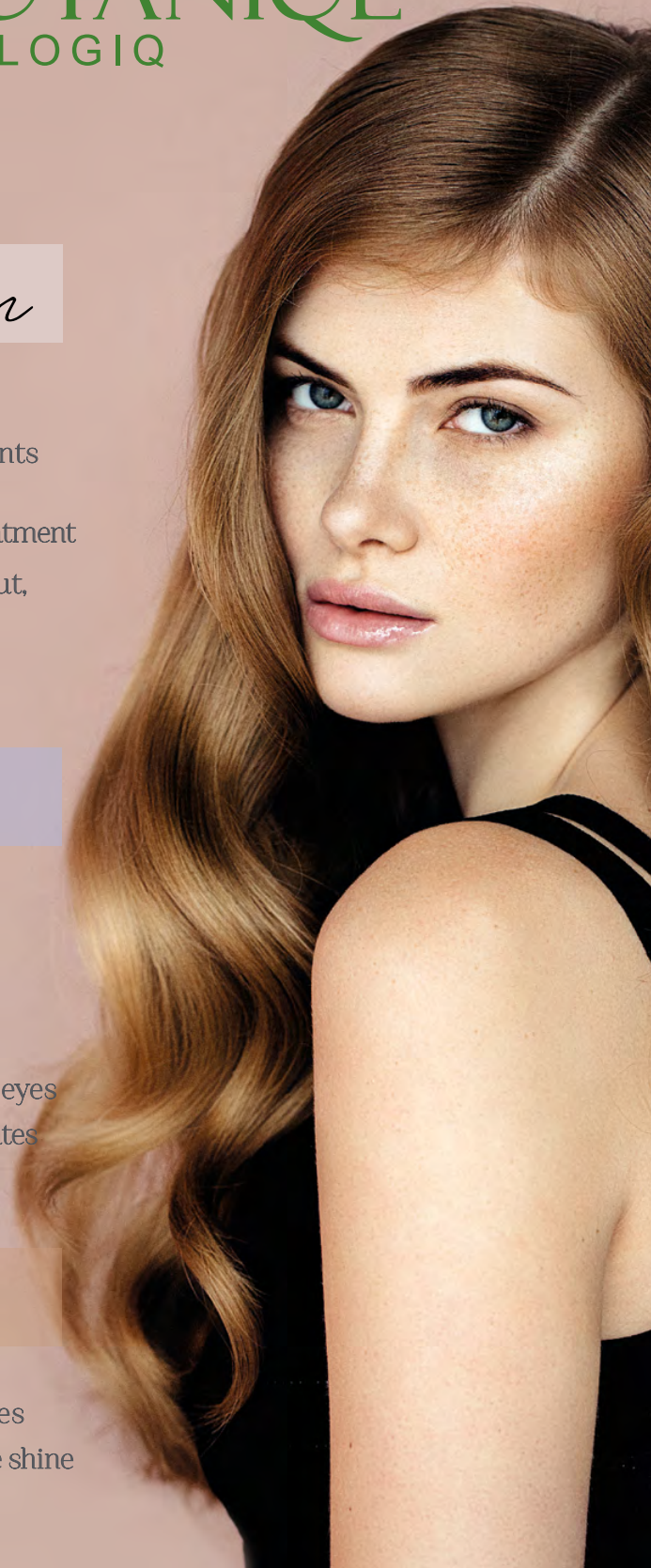
The effect after as little as 20-45 minutes

## *Professional effect at home*

Hair colour that lasts up to 8 washes

Luminiscent, vivid shade and intensive shine

Provides high grey hair coverage





INDEX-4728

## DEEP CARAMEL

Plant Keratin  
Chamomile Extract

For light blonde to dark blonde hair.

Tone-on-Tone Colouring Gel Shampoo is an exceptionally mild ammonia-free hair colouring product, providing a clear, glossy color. Perfectly covers gray hair and gives an attractive shine that lasts up to 8 washes. The innovative, ready-to-use gel formula allows you to get a professional effect of vivid color at home.



INDEX-4729

## CHOCOLATE BROWN

Plant Keratin  
Walnut Extract

For dark blonde to medium brown hair.

Tone-on-Tone Colouring Gel Shampoo is an exceptionally mild ammonia-free hair colouring product, providing a clear, glossy color. Perfectly covers gray hair and gives an attractive shine that lasts up to 8 washes. The innovative, ready-to-use gel formula allows you to get a professional effect of vivid color at home.



INDEX-4773

## ROWANBERRY

Plant Keratin  
Pomegranate Extract

For light blonde to light brown hair.

Tone-on-Tone Colouring Gel Shampoo is an exceptionally mild ammonia-free hair colouring product, providing a clear, glossy color. Perfectly covers gray hair and gives an attractive shine that lasts up to 8 washes. The innovative, ready-to-use gel formula allows you to get a professional effect of vivid color at home.



INDEX-4730

## COFFEE BROWN

Plant Keratin  
Walnut Extract

For dark blonde to dark brown hair.

Tone-on-Tone Colouring Gel Shampoo is an exceptionally mild ammonia-free hair colouring product, providing a clear, glossy color. Perfectly covers gray hair and gives an attractive shine that lasts up to 8 washes. The innovative, ready-to-use gel formula allows you to get a professional effect of vivid color at home.



INDEX-4731

## NORDIC BLONDE

Plant Keratin  
Chamomile Extract

For light blonde to medium blonde hair. We recommend it for bleached hair.

Tone-on-Tone Colouring Gel Shampoo is an exceptionally mild ammonia-free hair colouring product, providing a clear, glossy color. Perfectly covers gray hair and gives an attractive shine that lasts up to 8 washes. The innovative, ready-to-use gel formula allows you to get a professional effect of vivid color at home.



INDEX-4765

## SILVER BLONDE

Plant Keratin  
Moon Stone

For very light blonde to blonde hair. Gray hair coverage up to 50%.

Tone-on-Tone Colouring Gel Shampoo is an exceptionally mild ammonia-free hair colouring product, providing a clear, glossy color. Perfectly covers gray hair and gives an attractive shine that lasts up to 8 washes. The innovative, ready-to-use gel formula allows you to get a professional effect of vivid color at home.



INDEX-4774

## GOLDEN COOPER

Plant Keratin  
Pomegranate Extract

For light blonde to dark blonde hair.

Tone-on-Tone Colouring Gel Shampoo is an exceptionally mild ammonia-free hair colouring product, providing a clear, glossy color. Perfectly covers gray hair and gives an attractive shine that lasts up to 8 washes. The innovative, ready-to-use gel formula allows you to get a professional effect of vivid color at home.



# TRAVEL SIZE PRODUCTS

**Biotanique travel size products** are very handy and will always be at hand when you need them. They can be taken anywhere, regardless of whether it is long hours in the office, air travel, business trip or a Sunday walk. Another advantage of their size is the possibility of trying out the cosmetic before buying full size product.



## ROSE CLEANSING TONER

Probiotic water [pro.aQua](#)  
Rose Water | Alpha Hydroxy Acids

ALL SKIN TYPES | day/night | 50ml

**Rose Cleansing Toner** deeply cleanses, unclogs pores and removes impurities from the skin. Restores its natural pH level after the cleansing ritual. Smooths and moisturizes the skin. The toner prepares the skin for the following skin care treatment.



## ALOE MICELLAR WATER

Probiotic water [pro.aQua](#)  
100% Pure Aloe Water

ALL SKIN TYPES | day/night | 100ml

**Aloe Micellar Water** is a light, non-greasy formula using micro-micelle technology, that easily removes impurities and even strong make-up.

Based on natural Aloe Water and probiotic water [pro.aQua](#), it provides the skin with fresh and radiant look.



SNAIL REPAIR THERAPY



ANTI-AGING BOOSTER  
INDEX: 4180 / 30 ml



SMOOTHING MAKE-UP BASE  
INDEX: 4630 / 30 ml



LIFTING FOUNDATION  
INDEX: 4827- 4828 - 4829 / 30 ml



FIRMING MAKE-UP REMOVER CLEANSING WIPES  
INDEX: 4445 / 20 pcs



ANTI-WRINKLE LIFTING EYE CREAM  
INDEX: 4039 / 15 ml

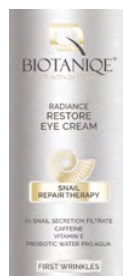
SNAIL REPAIR THERAPY



BIOACTIVE REGENERATING CREAM  
INDEX: 4044 / 50 ml



DE-AGING REVITALISING CREAM  
INDEX: 4045 / 50 ml



RADIANCE RESTORE EYE CREAM  
INDEX: 4046 / 15 ml



INTENSIVE NIGHT REPAIR CREAM/MASK  
INDEX: 4048 / 50 ml

SNAIL REPAIR THERAPY



ULTRA LIFTING CREAM  
INDEX: 4036 / 50 ml



ADVANCED REPAIR CREAM  
INDEX: 4037 / 50 ml



GLOBAL ANTI-AGE CREAM  
INDEX: 4038 / 50 ml



SNAIL & GOLD 24K FIRMING SHEET MASK  
INDEX: 4122 / 15 ml



SNAIL REGENERATING MASK  
INDEX: 4120 / 10 ml

PRO.AQUA



HYDRATING DAY CREAM  
INDEX: 9093 / 50 ml



ANTI-AGE DAY AND NIGHT CREAM  
INDEX: 9094 / 50 ml



NOURISHING NIGHT CREAM  
INDEX: 9138 / 50 ml



FIRMING EYE CREAM  
INDEX: 9095 / 15 ml



FIRMING SERUM  
INDEX: 9096 / 20 ml



PRO.AQUA



**SOOTHING MICELLAR WATER**  
INDEX: 9097 / 400 ml



**OIL-FREE TONER**  
INDEX: 9099 / 150 ml



**MILD CLEANSING GEL**  
INDEX: 9098 / 200 ml



**COOLING MIST**  
INDEX: 9141 / 100 ml



**HYDRATING MIST**  
INDEX: 9100 / 100 ml

PRO.AQUA



**HYDRATING CRYSTAL MASK**  
INDEX: 9101 / 10 ml



**ANTI-WRINKLE SHEET MASK**  
INDEX: 9102 / 15 ml



**ENZYMATIC PEELING**  
INDEX: 9140 / 8 ml

CAVIAR  
LUXURY ANTI-AGING



**REGENERATING REPAIR CREAM**  
INDEX: 4549 / 50 ml



**FIRMING EYE CREAM**  
INDEX: 4551 / 15 ml

VIPER VENOM



**ANTI-WRINKLE CREAM**  
INDEX: 4205 / 50 ml



**LIFTING CREAM**  
INDEX: 4206 / 50 ml



**EYE & LIP CONTOUR LIQUID FILLER**  
INDEX: 4208 / 20 ml



**POWERFUL ANTI-WRINKLE EYE PADS**  
INDEX: 4407 / 2 pcs

VIT C  
AGE CONTROL



**CLEANSING MICELLAR GEL**  
INDEX: 9134 / 250 ml



**FIRST WRINKLES ENERGISING CREAM**  
INDEX: 4041 / 50 ml



**REJUVENATING EYE CREAM**  
INDEX: 4062 / 15 ml



**ADVANCED LIFTING SERUM**  
INDEX: 4061 / 20 ml

CBD OIL



REGENERATING MAKE-UP REMOVER CLEANSING WIPES  
INDEX: 4447 / 20 pcs



ALL-IN-ONE REGENERATING OIL  
INDEX: 4293 / 30 ml



RESTORATIVE ANTI-WRINKLE DAY CREAM  
INDEX: 4290 / 50 ml



ANTI-WRINKLE NIGHT CREAM/MASK  
INDEX: 4291 / 50 ml

CBD OIL



DEEP CLEANSING PEELING  
INDEX: 4322 / 75 ml



REGENERATING JELLY MASK  
INDEX: 4292 / 10 ml



CBD CLEANSING TONER  
INDEX: 4369 / 150 ml



CBD MICELLAR WATER  
INDEX: 4321 / 400 ml



GENTLE CLEANSING GEL  
INDEX: 4368 / 250 ml

ALOE VERA



ALOE MICELLAR WATER  
INDEX: 4210 / 400 ml



ALOE CLEANSING GEL  
INDEX: 4138 / 250 ml



MOISTURIZING MAKE-UP REMOVER WIPES  
INDEX: 4764 / 25 pcs



ALOE BI-PHASE MAKEUP REMOVER  
INDEX: 4848 / 150 ml

ALOE VERA



DEEPLY HYDRATING GEL CREAM  
INDEX: 4142 / 50 ml



HYDRATING MATTIFYING GEL CREAM  
INDEX: 4143 / 50 ml



ALOE HYDRATING SERUM  
INDEX: 4144 / 20 ml



SOOTHING HYDRATING SHEET MASK  
INDEX: 4186 / 15 ml



HYDRATING MATTIFYING GEL CREAM  
INDEX: 4135 / 12 ml

PURE DETOX



**CHARCOAL CLEANSER**  
INDEX: 4055 / 250 ml



**CHARCOAL PEELING-GEL-MASK 3IN1**  
INDEX: 4056 / 150 ml



**CHARCOAL BLACK MASK PEEL-OFF**  
INDEX: 4071 / 8 ml  
INDEX: 4072 / 50 ml

MICRO PURIFYING



**MINERAL GOMMAGE PEELING 2IN1**  
INDEX: 4017 / 75 ml



**GENTLE FOAMING FACE CLEANSER**  
INDEX: 4018 / 250 ml



**GENTLE FOAMING FACE CLEANSER**  
INDEX: 4185 / 150 ml



**CLEANSING MAKE-UP REMOVER WIPES**  
INDEX: 4763 / 25 pcs



**ROSE BI-PHASE MAKEUP REMOVER**  
INDEX: 4847 / 150 ml

HANDS CARE



**REGENERATING HAND CREAM**  
INDEX: 4768 / 75 ml



**DEEP MOISTURIZING HAND AND NAILS CREAM**  
INDEX: 4769 / 75 ml



**INTENSIVE REGENERATING HAND MASK**  
INDEX: 9159 / 2x15 ml



**DEEP MOISTURIZING MASK FOR HANDS AND NAILS**  
INDEX: 9158 / 2x15 ml

FEET CARE



**CALLUS REMOVER**  
INDEX: 4885 / 75 ml



**INTENSIVELY SOFTENING FOOT CREAM**  
INDEX: 4884 / 75 ml



**EXFOLIATING FOOT MASK**  
INDEX: 4771 / 2x15 ml



**REGENERATING FOOT MASK**  
INDEX: 4772 / 2x15 ml

ON SKIN



**REGENERATING SHEET MASK**  
INDEX: 4833 / 15 ml



**HYDRATING SHEET MASK**  
INDEX: 4796 / 15 ml



**FOAMING FACE WASH**  
INDEX: 4498 / 150 ml



**RICH TONER**  
INDEX: 4501 / 150 ml



**ENZYMATIC PEELING**  
INDEX: 4502 / 75 ml



**DAILY SORBET MOISTURIZER**  
INDEX: 4494 / 50 ml



**PERFECTING CREAM**  
INDEX: 4853 / 50 ml



**PERFECTING SERUM**  
INDEX: 4854 / 20 ml

ON SKIN



**PROTECTIVE INTIMATE GEL WASH**  
INDEX: 4760 / 400 ml



**REGENERATING INTIMATE OIL**  
INDEX: 4758 / 90 ml



**REGENERATING INTIMATE CLEANSING GEL**  
INDEX: 4662 / 400 ml



**HYDRATING INTIMATE WASH EMULSION**  
INDEX: 4661 / 400 ml

BIOTANIQUE  
ECOLOGIQ



**SOOTHING MICELLAR WATER**  
INDEX: 4844 / 300 ml



**CLEANSING MICELLAR WATER**  
INDEX: 4845 / 300 ml



**MOISTURIZING MICELLAR WATER**  
INDEX: 4846 / 300 ml

BIOTANIQUE  
ECOLOGIQ

BIOTANIQE  
ECOLOGIQ



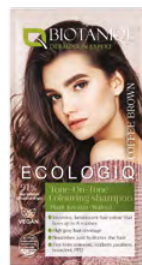
**DEEP CARAMEL**  
INDEX: 4728 / 28 ml



**CHOCOLATE BROWN**  
INDEX: 4729 / 28 ml

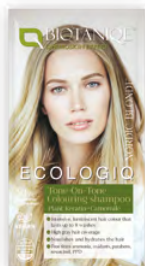


**ROWANBERRY**  
INDEX: 4773 / 28 ml



**COFFEE BROWN**  
INDEX: 4730 / 28 ml

BIOTANIQE  
ECOLOGIQ



**NORDIC BLONDE**  
INDEX: 4731 / 28 ml



**SILVER BLONDE**  
INDEX: 4765 / 28 ml



**GOLDEN COOPER**  
INDEX: 4774 / 28 ml

TRAVEL SIZE  
PRODUCTS



**ROSE CLEANSING  
TONER**  
INDEX: 4703 / 50 ml



**ALOE MICELLAR  
WATER**  
INDEX: 4697 / 100 ml

# Maurissé

Maurissé brands are complex and complementary offer for women, who represent specific needs, vision and values of Beauty.



**Selfie Project** - cosmetics developed by specialists for the exceptionally demanding young skin.



**ON SKIN** - new dimension of the vegan skin care in accordance to Clean Beauty philosophy.

DISCOVER MORE



**Ecologiq** - line of natural cosmetics, formulated for the sensitive skin of the whole body.



**Biotanique** - rejuvenating cosmetics based on probiotic water and natural active ingredients.



BIOTANIQE®  
DERMOSKIN EXPERT

---

SMART SKIN SUPPORT

For more information please contact BiotanIQ Team at:  
[info@biotaniqe.com](mailto:info@biotaniqe.com)

[www.biotaniqe.com](http://www.biotaniqe.com)

